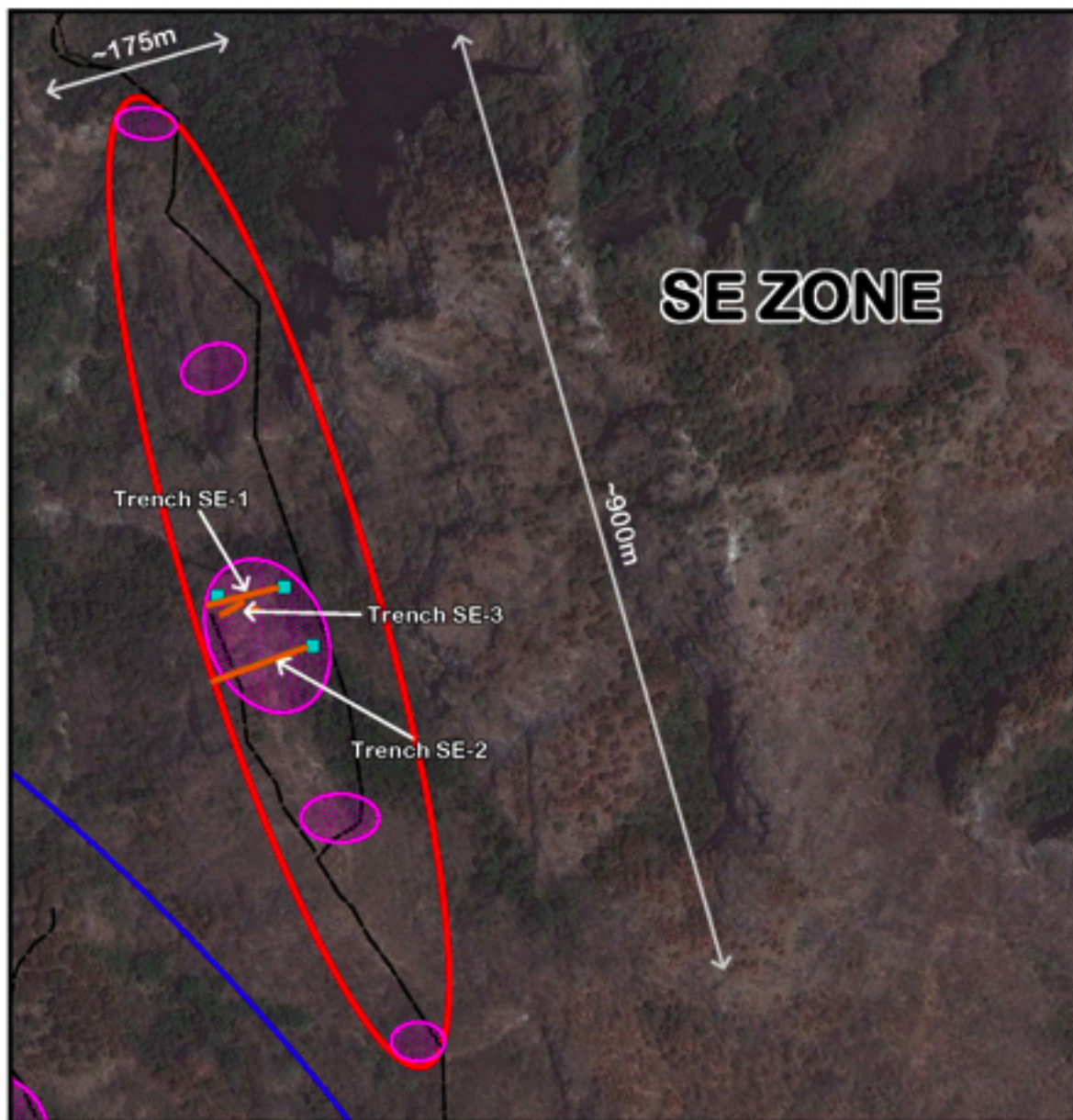


Tecomate, Mexico



NOTES

Trench SE-1:
0.43g/t Au & 15.6 g/t Ag / 20.2m
(0.67g/t Au/Eq / 20.2m*)

Trench SE-2:
0.89 g/t Au & 11.4 g/t Ag / 18.0m
(1.07 g/t Au/Eq / 18.0m*)

Trench SE-3:
0.86 g/t Au & 23.6 g/t Ag / 27.0m
(1.23 g/t Au/Eq / 27.0m*)

(*Au/Eq using 64:1 silver/gold ratio)

LEGEND

- Area of Known Mineralization
- Proposed Drill Pad Location
- Maintained Dirt Road
- Foot Path / Trail
- Channel Sample location

